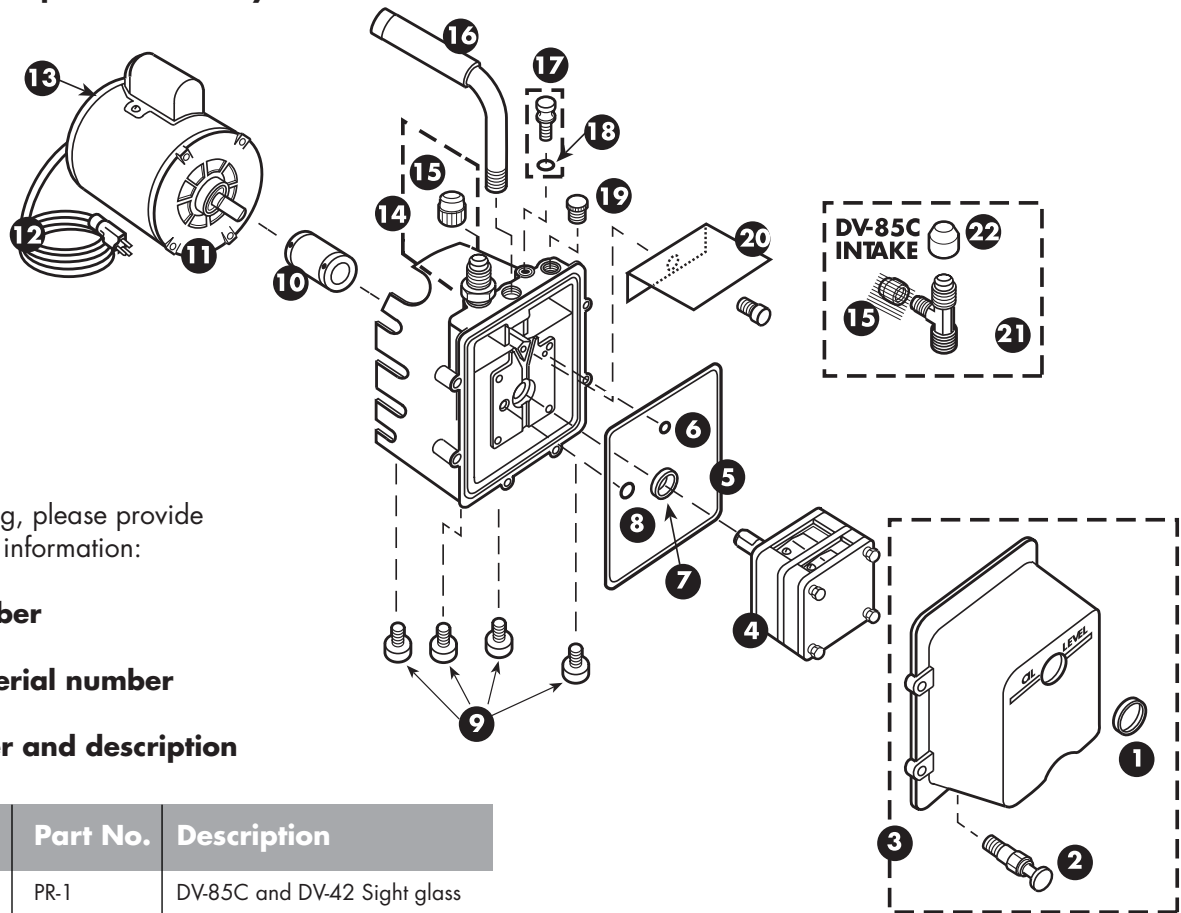


## DV-42, DV-42N and DV-85C Series Vacuum Pumps

Manufactured prior to January 2001



When ordering, please provide the following information:

**Model number**

**Four digit serial number**

**Part number and description**

Reference	Part No.	Description
1	PR-1	DV-85C and DV-42 Sight glass
2	PR-2	Drain valve
3	Obsolete	DV-85C and DV-42 Cover assembly includes sight glass and drain valve
3	Obsolete	DV-42N Cover assembly includes sight glass and drain valve
4	PR-403	DV-42N Cartridge complete with o-rings and cover seal
5	Obsolete	Cover seal
6	PR-12	O-ring
7	PR-3	Shaft Seal
8	P90015	O-ring
9	PR-4	Rubber foot and screw assembly (1 per package)
10	PR-6	Flexible coupler
10	Obsolete	Flexible coupler (-250 Models after Serial No. 0198)
11	PR-207	1/2 HP, 115/230V, 50/60 HZ motor with line cord and switch

Reference	Part No.	Description
11	PR-206	1/2 HP Motor with line cord and switch
12	PR-31	Line Cord
13	PR-30	Motor switch- rocker (Marathon motor)
13	PR-54	115/230V Motor switch- rocker (Emerson motor after Serial No. 0198)
14	PR-32	DV-42 Intake with cap
15	NFT5-4	1/4" O-ring cap
16	PR-205	Cushioned handle- 3/8" nipple
17	PR-7	Gas Ballast with o-ring assembly
18	P90009	O-ring and gas ballast
19	PR-22	Oil fill plug with o-ring for newer style DV-42
20	Obsolete	DV-42 and DV85C Splash guard and screw
21	PR-5	DV-85C Intake tee with caps
22	NFT5-6	3/8" O-ring cap
not shown	PR-18	Cartridge valve repair kit