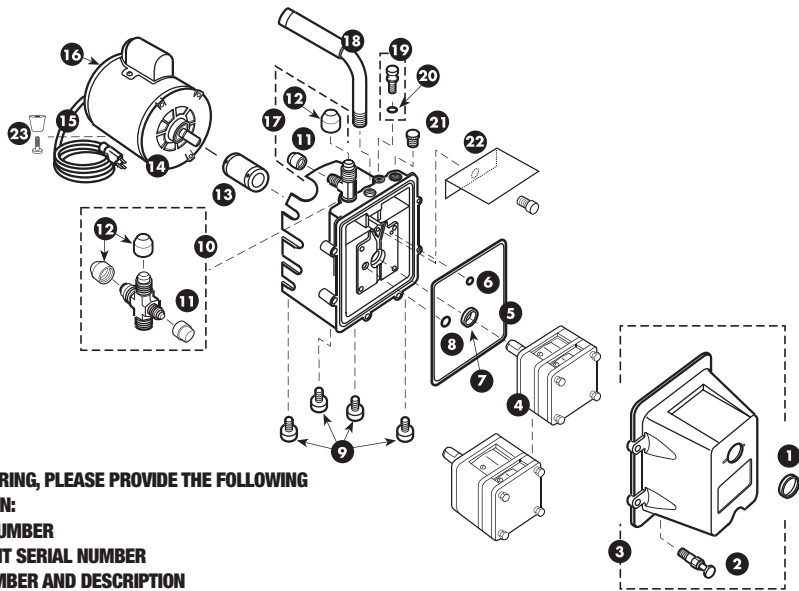


# DV-3 AND DV-5 SERIES VACUUM PUMPS MANUFACTURED PRIOR TO JANUARY 2001



**WHEN ORDERING, PLEASE PROVIDE THE FOLLOWING INFORMATION:**

- **MODEL NUMBER**
- **FOUR DIGIT SERIAL NUMBER**
- **PART NUMBER AND DESCRIPTION**

REFERENCE	PART NO.	DESCRIPTION
1	PR-8	Sight glass
2	PR-2	Drain valve
3	PR-10	Cover assembly includes glass and drain valve. Silver cover not available. Substitute Black Eliminator cover
4	Obsolete	No longer available
5	PR-216	Cover seal
6	PR-12	O-ring
7	PR-3	Shaft seal
8	P90015	O-ring
9	PR-4	Rubber foot and screw assembly (one per package)
10	PR-24	Intake cross with caps DV-5
10	PR-5	Intake tee with caps DV-3
11	NFT5-4	1/4" O-ring
12	NFT5-6	3/8" O-ring
13	PR-6	Flexible coupler
13	PR-53	Flexible coupler (Needed for replacing motor with shorter shaft)

REFERENCE	PART NO.	DESCRIPTION
14	PR-206	1/2 HP, 115 V, 60 HZ Motor w/ line cord and switch
14	PR-207	1/2 HP, 115/230 V, 50/60 HZ Motor w/ line cord and switch
15	PR-31	Line cord (Emerson motor)
16	PR-30	115 V Motor switch, rocker (Marathon motor)
16	PR-54	115/230 V Motor switch, rocker (Emerson motor after Serial No. 0198)
17	PR-5	Intake tee with caps
18	PR-205	Cushioned handle
19	PR-7	Gas Ballast w/ o-ring assembly
20	P90009	O-ring and gas ballast
21	PR-22	DV-3 and DV-5 Oil - II plug with O-ring
22	PR-40	Splash guard with screw
23	PR-42	Motor foot with screw
Not shown	PR-18	Cartridge valve repair kit