



# A2L PRODUCTS

## PLATINUM BEAST

DV-340N 12 CFM Vacuum Pump


Made in the USA 



## PLATINUM DC 8.4

DV-240DC 8.4 CFM Vacuum Pump


The DC motor pump is tough, versatile, and powerful enough to pull a deep vacuum on virtually any size system

Made in the USA 



## ELIMINATOR DC 6E

DV-6EDC 6 CFM Vacuum Pump

Made in the USA 



## F6-BOOST

BLDC Ignition-Proof Refrigerant Recovery Machine

Provides over 20% faster vapor recovery rates than the competition



## F6-DP

Refrigerant Recovery Machine

Full one horsepower motor and powerful dual piston compressor

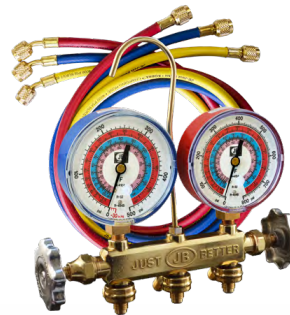


## PATRIOT 22633

Rugged 2-Valve Manifold

A2L Gauges and KOBRA CCLE-60" Hose Set

Made in the USA 



## PLATINUM/ELMINATOR

Spark-Proof Pumps

Spark-proof, dual voltage motor with switch and removable, interchangeable power cord

Made in the USA 




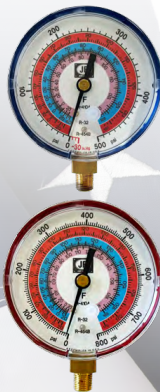
## A2L Gauges

M2-861 Compound/  
M2-862 Pressure

A2L refrigerants, R32 and R454B, with 410A

3-1/8" Illuminating, Class 1, 1% metal gauges with high impact clear view Lexan lens

Made in the USA 



## LD-5000 PROWLER & LD-3000 QUEST

Electrochemical Refrigerant Leak Detectors


Detect all HFC, HCFC, HFO and blended refrigerants

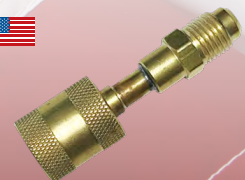


## A2L Reverse Thread Adapters

QC-A2L-LH Left-handed 1/4" female flare x 1/4" male flare to be used for non-automotive A2L applications such as R454B/R32 tanks

QC-1234-LH Left-handed thread 1/2" ACME for automotive

Made in the USA 



# JB INDUSTRIES

800.323.0811 JBIND.COM SALES@JBIND.COM